

Operator name and signature: Rolf Ugilt Rolf Ugilt

Output:	11404 lm
Peak:	4287 cd
Lux@50cm:	17148 Lux
Power:	80,6 W
Power Factor / DF $\phi$ 1:	1,0
Standby power	0,97 W

Light efficacy:

142 Lumen/Watt

Light quality:

CRI: 81,6

Color temperature:

6226 K



According to regulation (EU) 2019/2015

Directionality:	Directional
Useful Lumen:	11194 lm
$\eta$ TM - Efficacy	163 lm/W
Energy Class:	C

Product name:

**NOVA 12K 100%**

Item number:

**03.5444**

Date and time:

**14-04-2021 09:17:34**

Description:

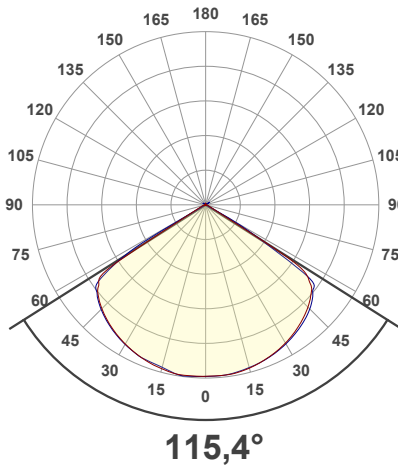
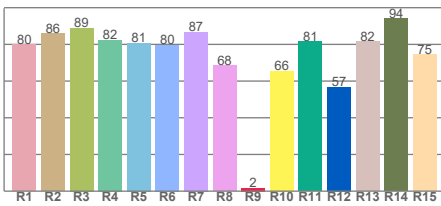
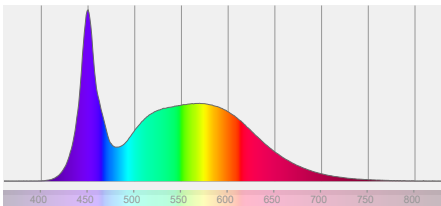
**Standby Power [W]: 0,97**

**Sensor distance: 350cm**

**Warmup: <2% in 15 minutes**

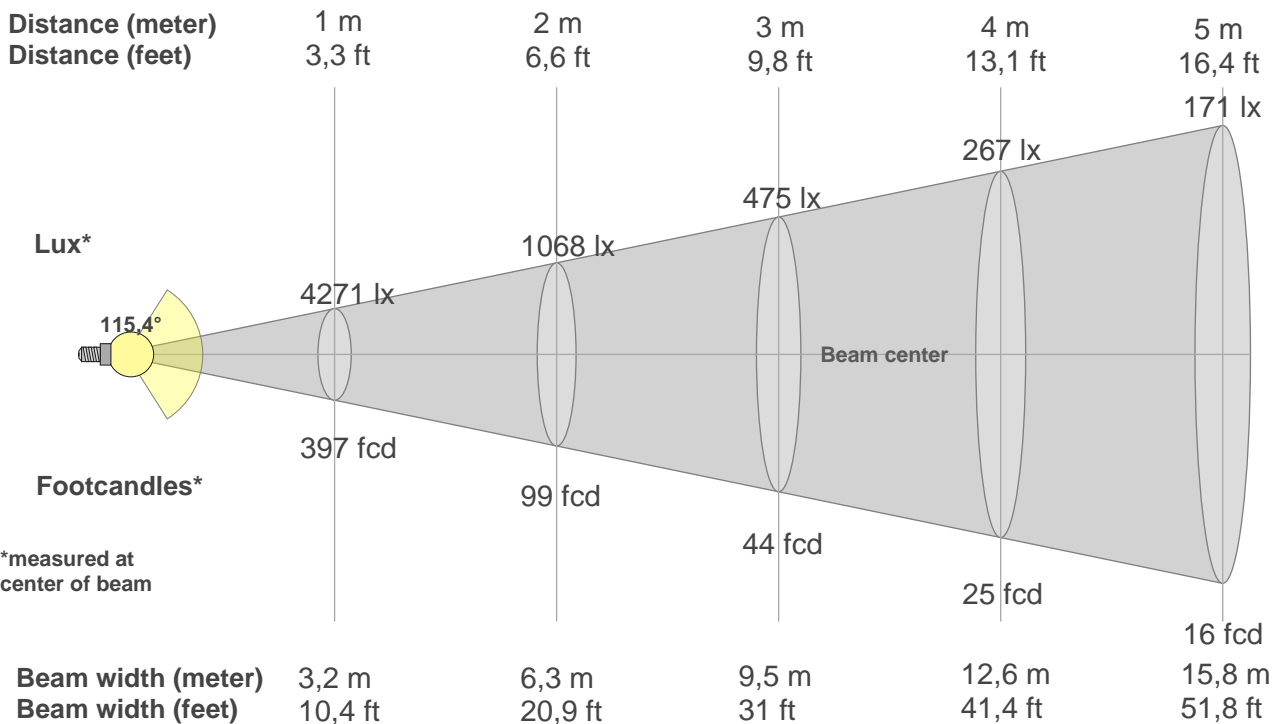
**Power supply: 230Vac**

Spectra



**BEAM DETAILS**

Beam distance: 130,7 meters



**Beam intensities from 1-20m**

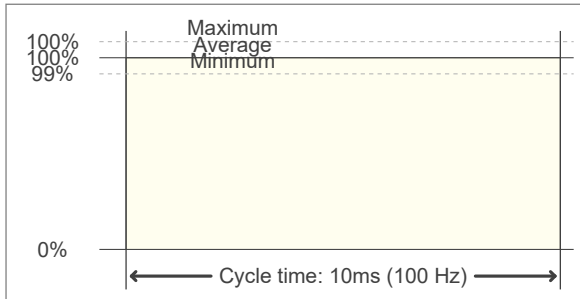
1m	2m	3m	4m	5m	6m	7m	8m	9m	10m	11m	12m	13m	14m	15m	16m	17m	18m	19m	20m
3,3ft	6,6ft	9,8ft	13,1ft	16,4ft	19,7ft	23ft	26,2ft	29,5ft	32,8ft	36,1ft	39,4ft	42,7ft	45,9ft	49,2ft	52,5ft	55,8ft	59,1ft	62,3ft	65,6ft
427lx	1068lx	475lx	267lx	171lx	119lx	87lx	67lx	53lx	43lx	35lx	30lx	25lx	22lx	19lx	17lx	15lx	13lx	12lx	11lx
396,8fc	99,2fcd	44,1fcd	24,8fcd	15,9fcd	11fcd	8,1fcd	6,2fcd	4,9fcd	4fcd	3,3fcd	2,8fcd	2,3fcd	2fcd	1,8fcd	1,6fcd	1,4fcd	1,2fcd	1,1fcd	1fcd

**FLICKER DETAILS**

**Flicker curve (complete sampled flicker signal)**



**Flicker frame (frame of one flicker period)**



<b>Flicker frequency:</b>	<b>100 Hz</b>
<b>Flicker index:</b>	<b>0</b>
<b>Flicker percentage:</b>	<b>0,09 %</b>
<b>SVM: (Visual flicker)</b>	<b>0</b>
<b>Pst LM:</b>	<b>0,03</b>
<b>SDCM</b>	<b>4,2</b>
<b>Rated Color Temperature</b>	<b>6000 K</b>
<b>Duv</b>	<b>0,0012</b>
<b>CIE Coordinates (x, y)</b>	<b>0,318, 0,332</b>
<b>CIE Coordinates (u, v)</b>	<b>0,200, 0,314</b>

**WARMUP DETAILS according to EN 13032-1**

