

Operator name and signature: Rolf Ugilt *Rolf Ugilt*

Output:	3488 lm
Peak:	1378 cd
Lux@50cm:	5511 Lux
Power:	28,0 W
Power Factor / DF ϕ 1:	0,9
Standby power	0,23 W

Light efficacy:

125 Lumen/Watt

Light quality:

CRI: 85,8

Color temperature:

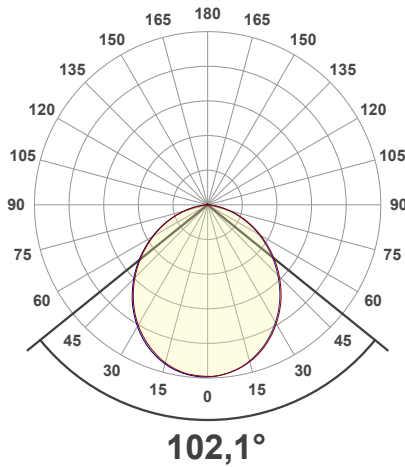
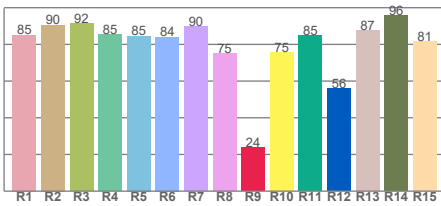
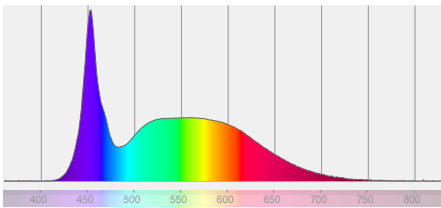
6911 K



According to regulation (EU) 2019/2015

Directionality:	Directional
Useful Lumen:	2846 lm
Energy Class:	E
η TM - Efficacy	119 lm/W

Spectra



Product name:

VEGA LITE COMPACT

Item number:

03.5673

Date and time:

11-03-2021 08:47:21

Description:

Standby Power [W]: 0,23

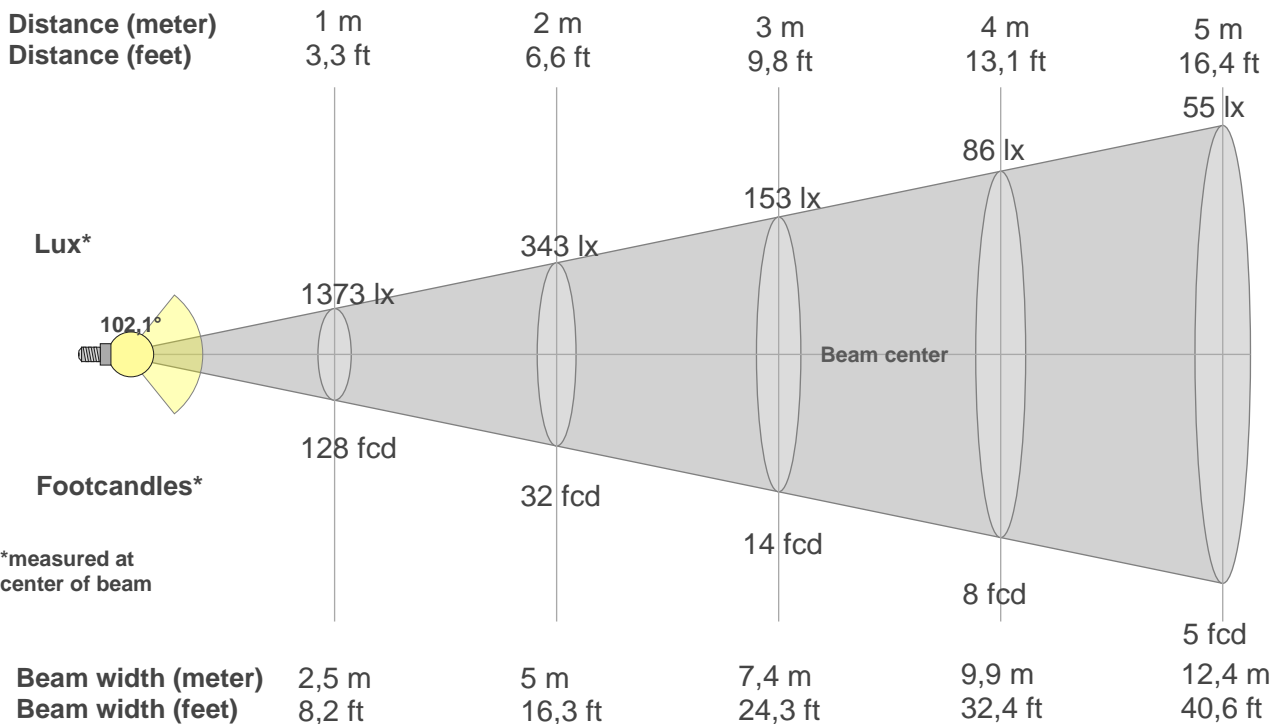
Sensor distance: 350cm

Warmup: <2% in 15 minutes

Power Supply: 230Vac

BEAM DETAILS

Beam distance: 74,1 meters



*measured at center of beam

Beam intensities from 1-20m

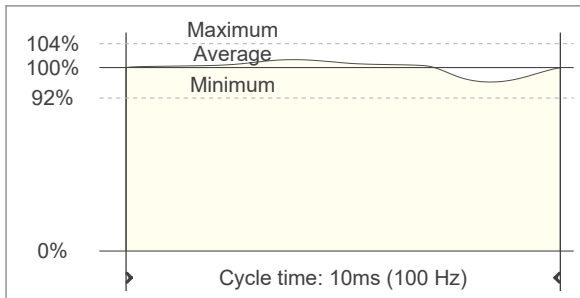
1m	2m	3m	4m	5m	6m	7m	8m	9m	10m	11m	12m	13m	14m	15m	16m	17m	18m	19m	20m
3,3ft	6,6ft	9,8ft	13,1ft	16,4ft	19,7ft	23ft	26,2ft	29,5ft	32,8ft	36,1ft	39,4ft	42,7ft	45,9ft	49,2ft	52,5ft	55,8ft	59,1ft	62,3ft	65,6ft
1373lx	343lx	153lx	86lx	55lx	38lx	28lx	21lx	17lx	14lx	11lx	10lx	8lx	7lx	6lx	5lx	5lx	4lx	4lx	3lx
127,6fcd	31,9fcd	14,2fcd	8fcd	5,1fcd	3,5fcd	2,6fcd	2fcd	1,6fcd	1,3fcd	1,1fcd	0,9fcd	0,8fcd	0,7fcd	0,6fcd	0,5fcd	0,4fcd	0,4fcd	0,4fcd	0,3fcd

FLICKER DETAILS

Flicker curve (complete sampled flicker signal)



Flicker frame (frame of one flicker period)



Flicker frequency:	100 Hz
Flicker index:	0,01
Flicker percentage:	6,63 %
SVM: (Visual flicker)	0,17
Pst LM:	n/a
SDCM	5,1
Rated Color Temperature	6500 K
Duv	0,0015

WARMUP DETAILS according to EN 13032-1

